

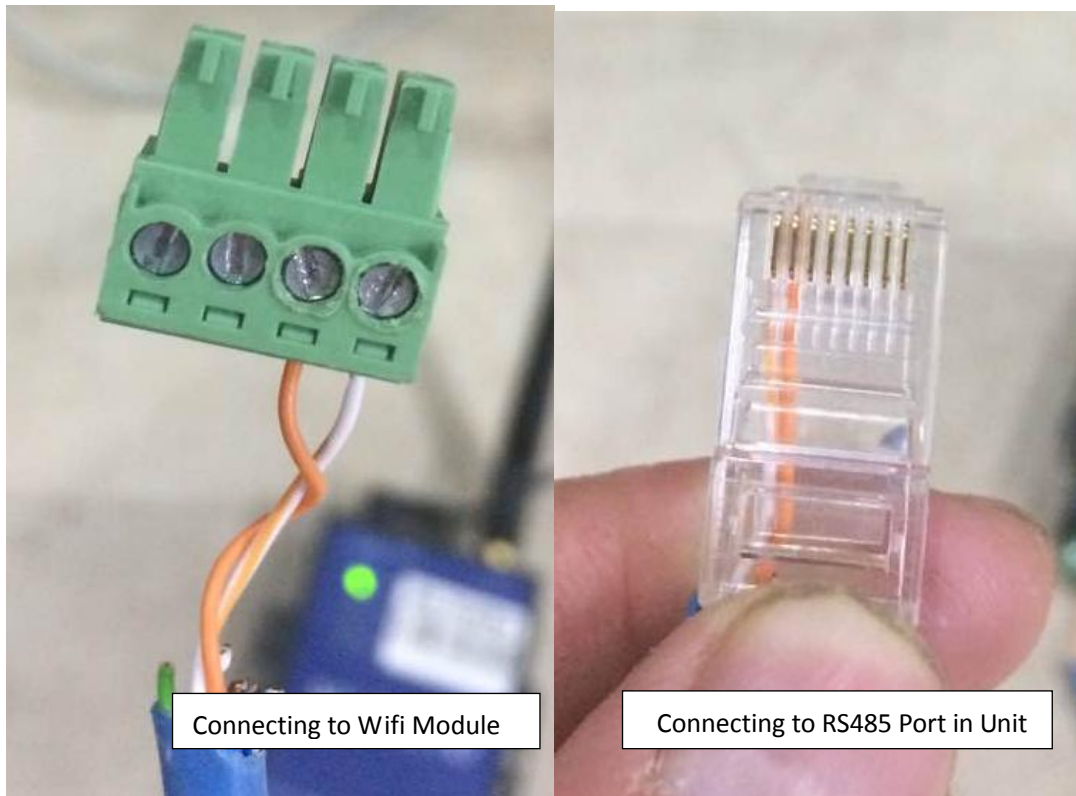


PH1800 Series Wifi Kit Connection Instructions

1. Product Model: PH1800 Series
2. Connecting Instructions

2.1 Wiring for Wifi Module

To Connect Wiring between Unit and Wifi Module as Below



2.2 Unit Connection

Plug the green connector to RS485 port in Wifi Module as follows.



WccSolar

Polígono Industrial la negrilla Calle Imprenta 18 nave 44 41016 Sevilla España
Teléfono: 854556349 Servicio Técnico: 854803624
www.wccsolar.net EMAIL: Alex@wccsolar.es

PH1800 Series Wifi Kit Connection Instructions



Plug the RJ45 to the COM Port in Inverter Unit as below



3. Setting in Wifi Module

3.1 To Connect the Wifi in Computer

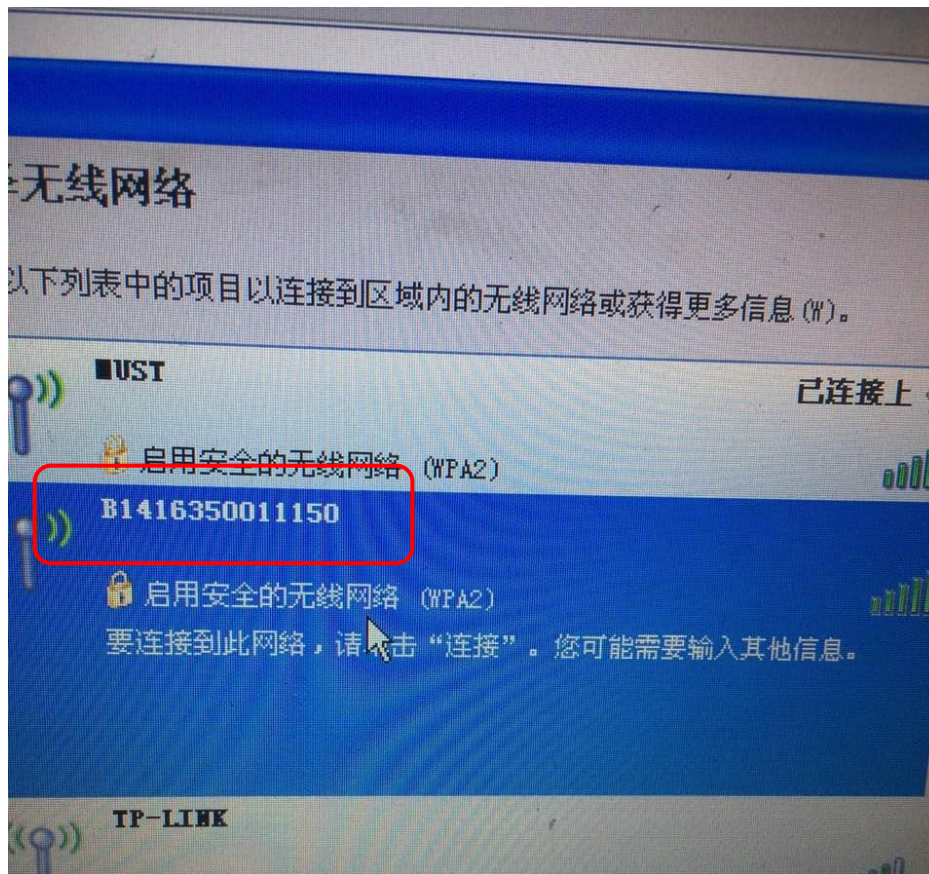


WccSolar

Poligono Industrial la negrilla Calle Imprenta 18 nave 44 41016 Sevilla España
Teléfono: 854556349 Servicio Técnico: 854803624
www.wccsolar.net EMAIL: Alex@wccsolar.es

PH1800 Series Wifi Kit Connection Instructions

Please Choose the Wifi Connection in your computer.



Please Choose the Wifi Net with the Same Serial NO as the WIFI
Module NUMBER as above pictures show.



WccSolar

Polígono Industrial la negrilla Calle Imprenta 18 nave 44 41016 Sevilla España
Teléfono: 854556349 Servicio Técnico: 854803624
www.wccsolar.net EMAIL: Alex@wccsolar.es

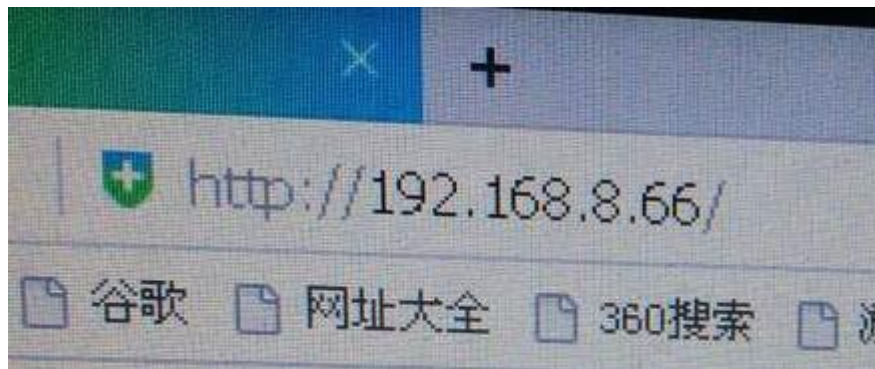
PH1800 Series Wifi Kit Connection Instructions



Then Put Password “12345678”, Connect it.

3.2 To Set Wifi Network Parameter

Please put in <http://192.168.8.66> in your Computer

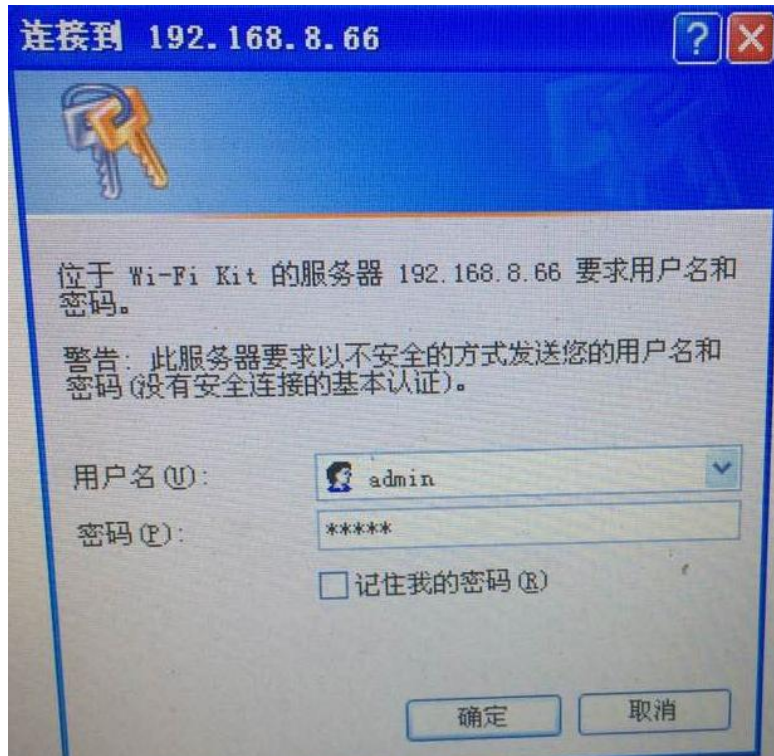




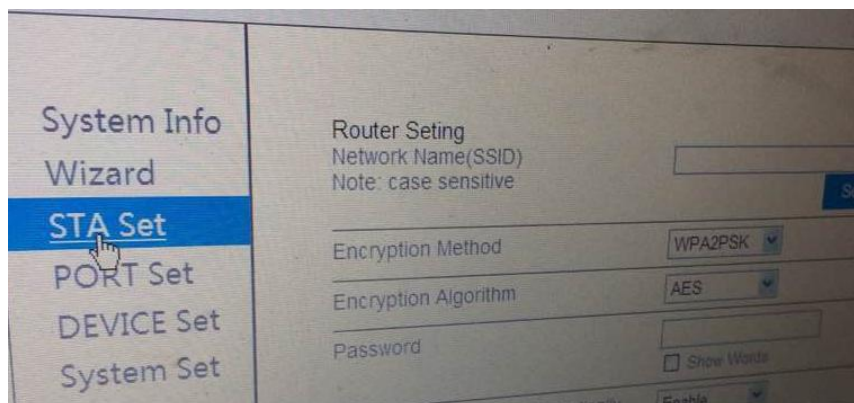
WccSolar

Polígono Industrial la negrilla Calle Imprenta 18 nave 44 41016 Sevilla España
Teléfono: 854556349 Servicio Técnico: 854803624
www.wccsolar.net EMAIL: Alex@wccsolar.es

PH1800 Series Wifi Kit Connection Instructions



Then Put in Account and Password, “ admin”, and enter the Setting as Above.



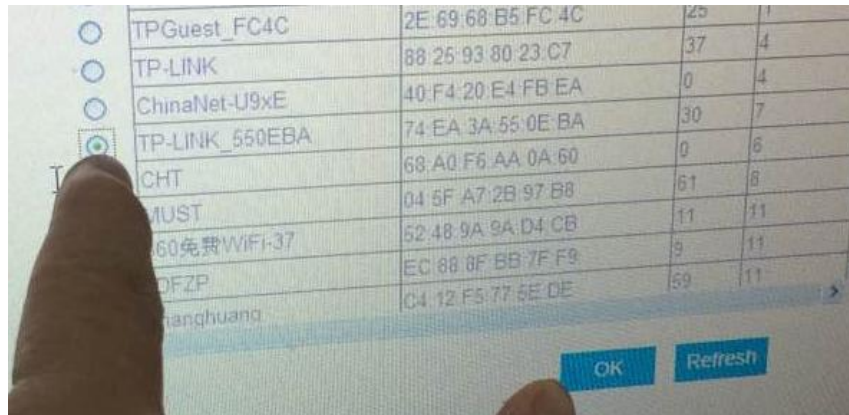


WccSolar

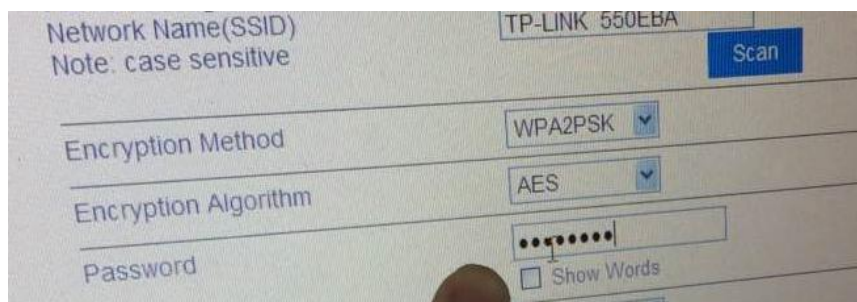
Polígono Industrial la negrilla Calle Imprenta 18 nave 44 41016 Sevilla España
Teléfono: 854556349 Servicio Técnico: 854803624
www.wccsolar.net EMAIL: Alex@wccsolar.es

PH1800 Series Wifi Kit Connection Instructions

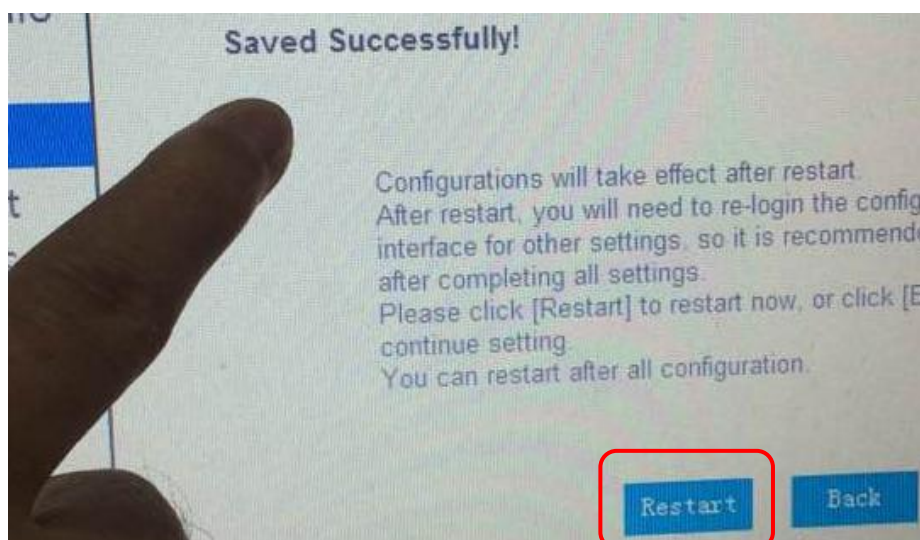
Click Button“ Scan”to review the table of WIFI Networks as follows.



To Choose the Available Wifi Network in your House and Enter.



To finish and Save the Setting, then Restart Wifi as follows





WccSolar

Polígono Industrial la Negrilla Calle Imprenta 18 nave 44 41016 Sevilla España
Teléfono: 854556349 Servicio Técnico: 854803624
www.wccsolar.net EMAIL: Alex@wccsolar.es

PH1800 Series Wifi Kit Connection Instructions

After Click Button Restart, Wifi Module will Beep and after the second Beep, the above two indicators will light and the two indicators at bottom will flicker.



The Extra-net Connecting Parameter appears in the Computer Interface as below.



Then it shows Wifi Module connects to Extra-net.

Back to Wire-less Connection Setting Page in Computer and Re-connect Wifi.



WccSolar

Poligono Industrial la negrilla Calle Imprenta 18 nave 44 41016 Sevilla España
Teléfono: 854556349 Servicio Técnico: 854803624
www.wccsolar.net EMAIL: Alex@wccsolar.es

PH1800 Series Wifi Kit Connection Instructions



4. To Connect to Monitoring Website

Please log in the web: [http:// solarmust.shinemonitor.com](http://solarmust.shinemonitor.com)

